

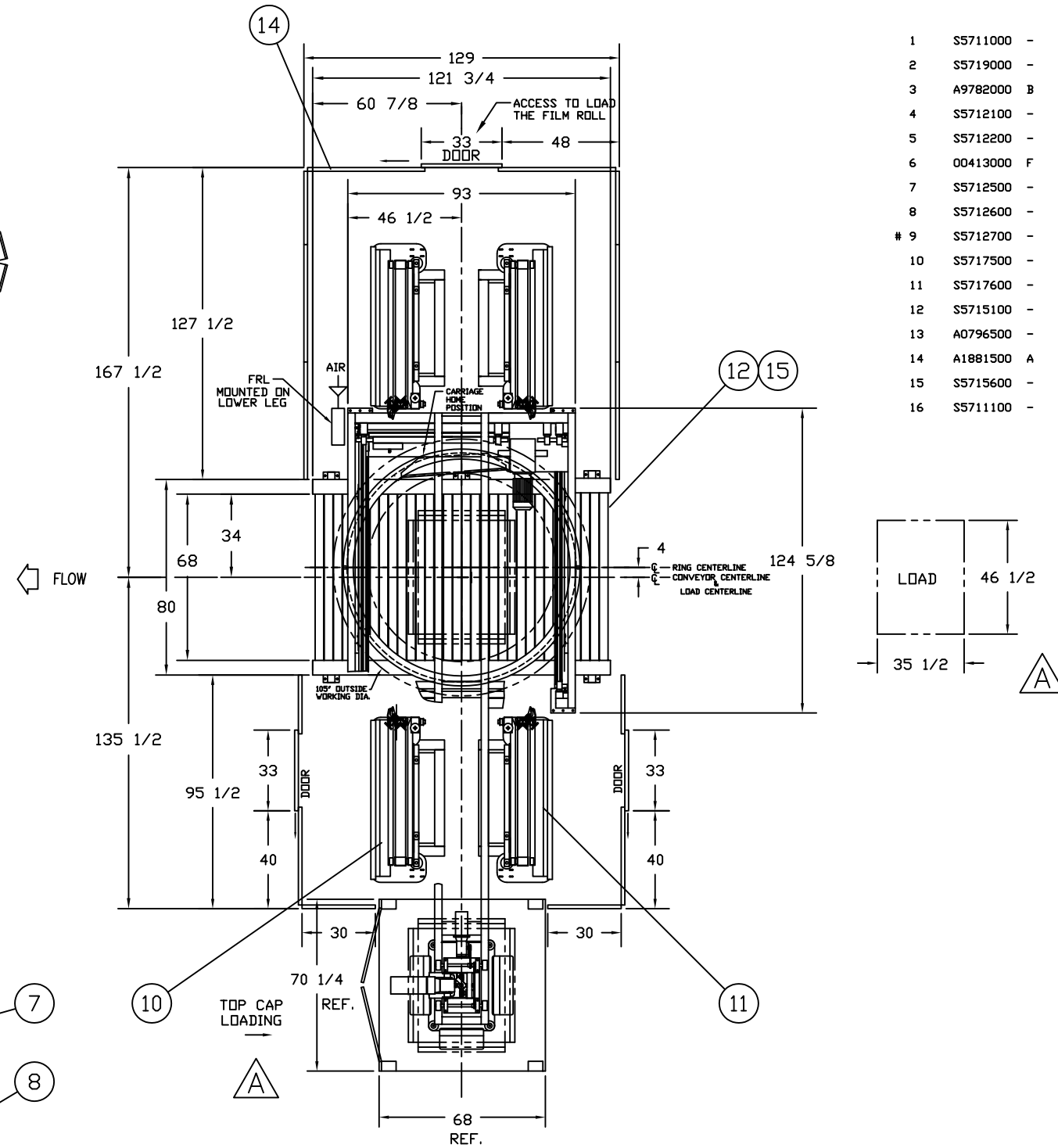
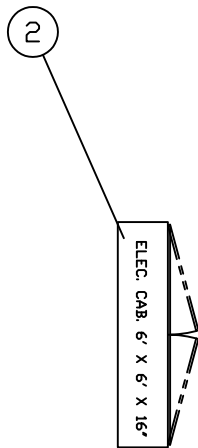
1. 10' STRAIGHT CONVEYOR, 3 1/2" DIA. * 3 3/4" CENTER ROLLERS, 11 GAUGE, ALL ROLLERS DRIVEN, AC MOTOR
2. MAXIMUM CONVEYOR SPEED : 30 FPM.
3. 20" VARI-STRETCH CARRIAGE.
4. CAPACITY : UP TO 80 LOADS PER HOUR (DEPENDING ON LOAD CONFIGURATION AND WRAP PATTERN REQUIRED).
5. MAXIMUM CARRIAGE SPEED : 40 RPM.
6. MAXIMUM LOAD WEIGHT : 3000 LBS.
7. INSTALLATION REQUIREMENTS : ELECTRICAL - 575 VAC, 3 PHASE, 60 Hz.
PNEUMATIC - 80 PSI., 35 CFM.
8. LOADS MUST BE INDEXED TO CENTERLINE OF CONVEYOR
9. MACHINE MUST BE INSTALLED ON A FIRM FLOOR AND PROPERLY LEVELED.
10. PAINT: LIGHT AND DARK BRONZE
11. ALL DIMENSIONS ARE +/- 1/4" UNLESS OTHERWISE NOTED.
12. DO NOT SCALE DRAWING USE DIMENSION SHOWN.
13. LOAD DIMENSIONS MULLER SPECIFICATIONS : WRAP ONLY

MAX. WIDTH = 48" MIN. WIDTH = 32"
 MAX. LENGTH = 50" MIN. LENGTH = 32"
 MAX. HEIGHT = 80" MIN. HEIGHT = 28"

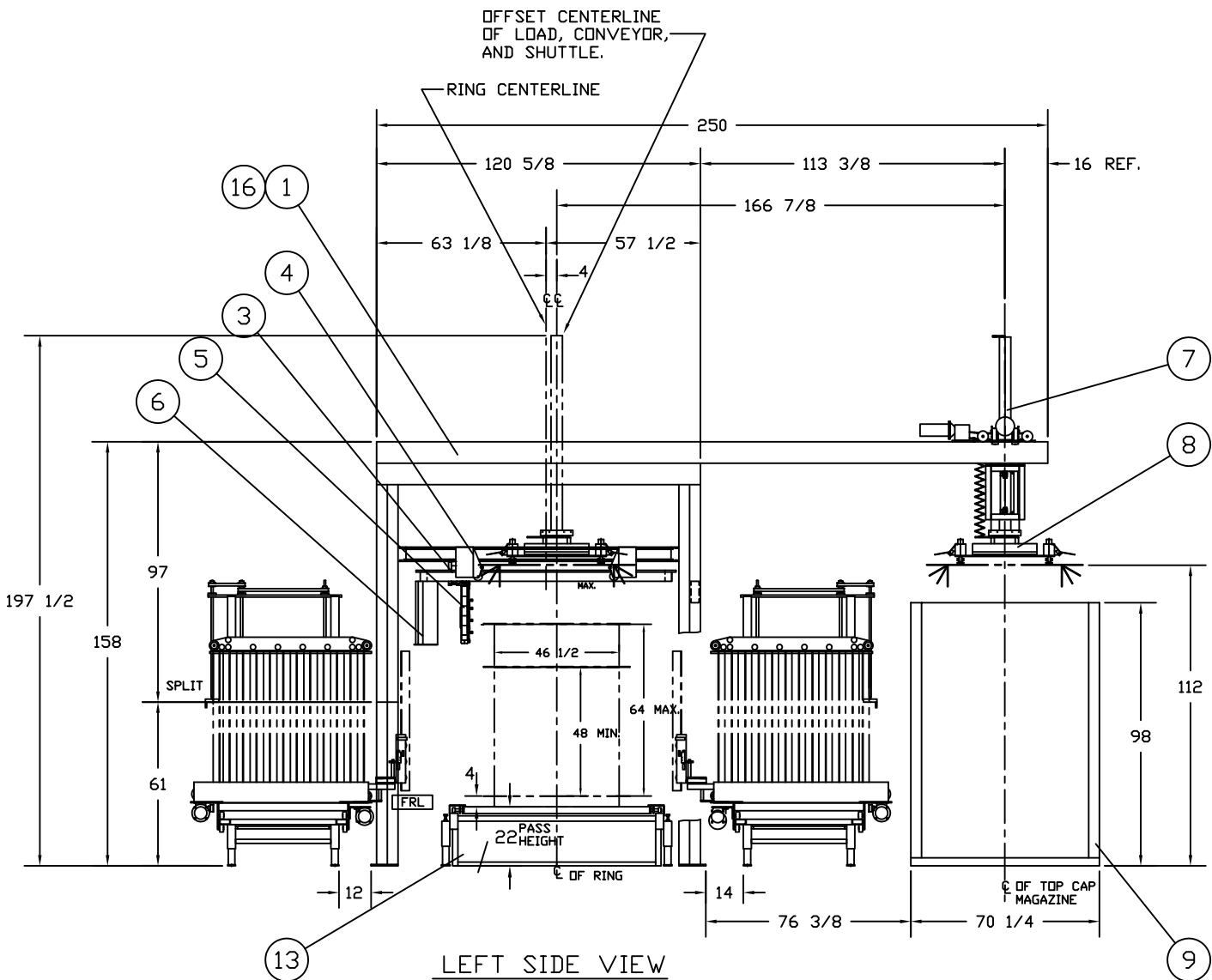
14. LOAD DIAGONAL: 70" MAXIMUM

15. LOAD DIMENSIONS MULLER SPECIFICATIONS: WITH CORNER POSTS & TOP CAP

MAX. WIDTH = 48" MIN. WIDTH = 37"
 MAX. LENGTH = 48" MIN. LENGTH = 36"
 MAX. HEIGHT = 68" MIN. HEIGHT = 40"



1	S5711000	-	FRAME ASSEMBLY (606-70) TCCP	1.000	EACH
2	S5719000	-	606 ELECTRICAL ASSEMBLY	1.000	EACH
3	A9782000	B	COMPOSITE RING FRAME ASSY	1.000	EACH
4	S5712100	-	CLAMP & SEAL TRAVELLING ASSY	1.000	EACH
5	S5712200	-	FILM CLAMP ASSY	1.000	EACH
6	00413000	F	CARRIAGE ASS'Y (STT200-PS)	1.000	EACH
7	S5712500	-	TOP CAP SHUTTLE ASSEMBLY	1.000	EACH
8	S5712600	-	TOP CAP FOLDER ASSEMBLY	1.000	EACH
# 9	S5712700	-	TOP CAP MAGAZINE ASSEMBLY	1.000	EACH
10	S5717500	-	CORNER POST APPLICATOR ASSY #1	2.000	EACH
11	S5717600	-	CORNER POST APPLICATOR ASSY #2	2.000	EACH
12	S5715100	-	10 FT. CONVEYOR ASSEMBLY	1.000	EACH
13	A0796500	-	LEG EXTENSION ASSEMBLY - 22	6.000	EACH
14	A1881500	A	7 FT. GUARDING FENCE ASSEMBLY	1.000	EACH
15	S5715600	-	BOTTOM TAB FOLDER ASSEMBLY	1.000	EACH
16	S5711100	-	LUBE SYSTEM ASSEMBLY	1.000	EACH



LEFT SIDE VIEW

TOP VIEW
 FLOW DIRECTION
 FROM RIGHT TO LEFT