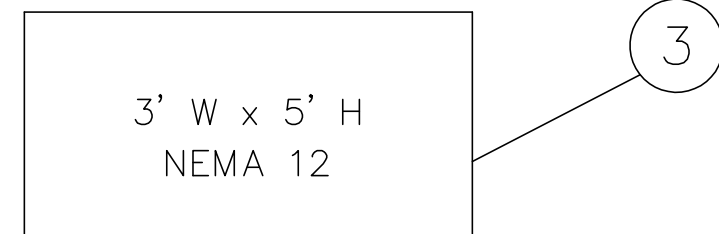
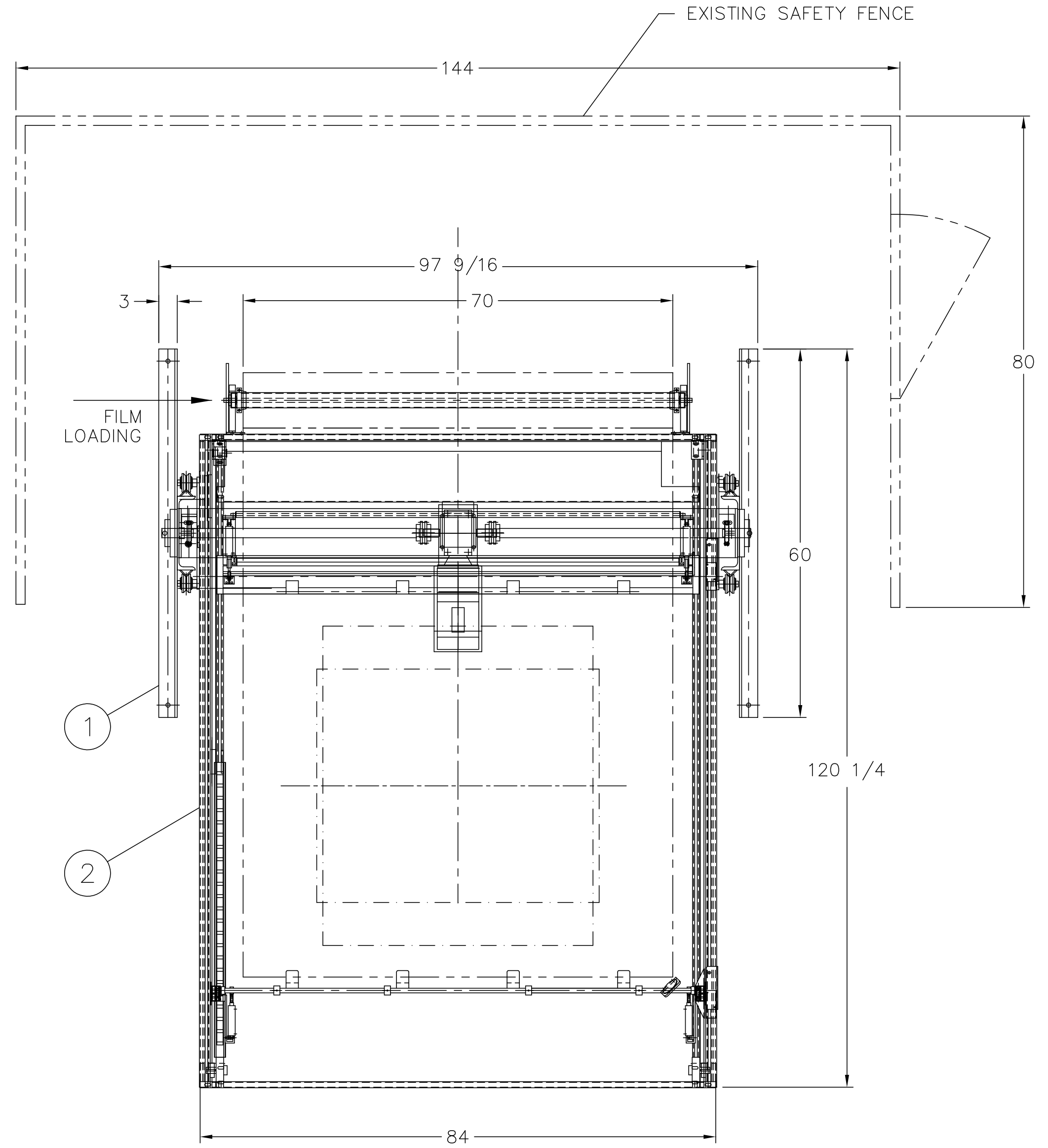
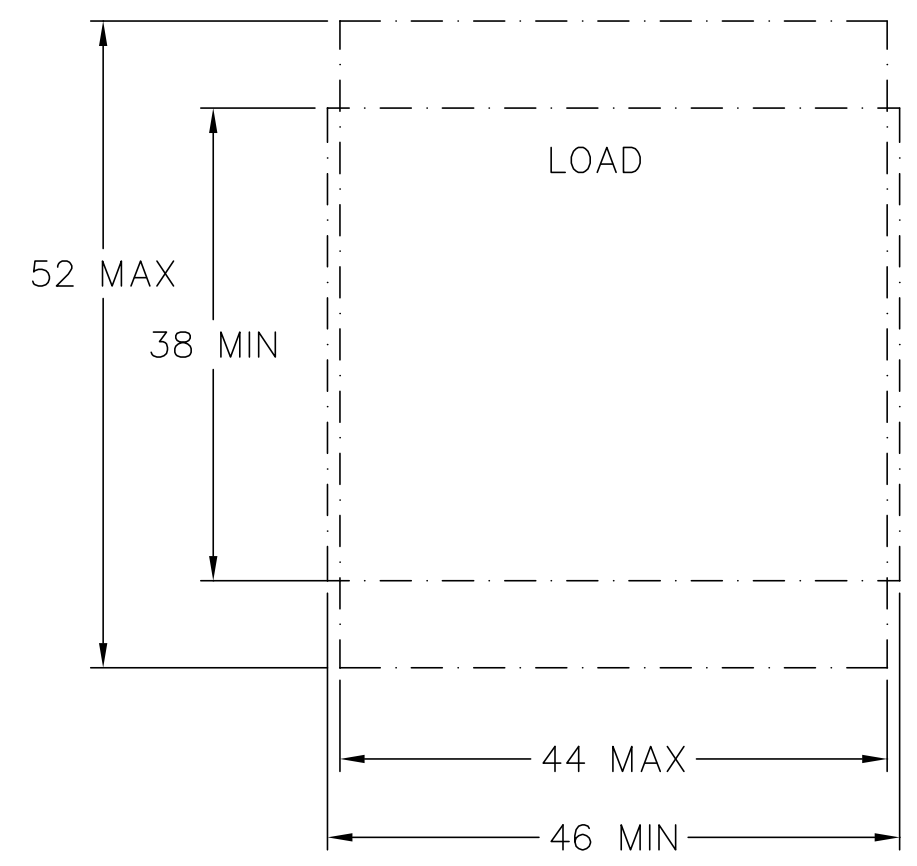
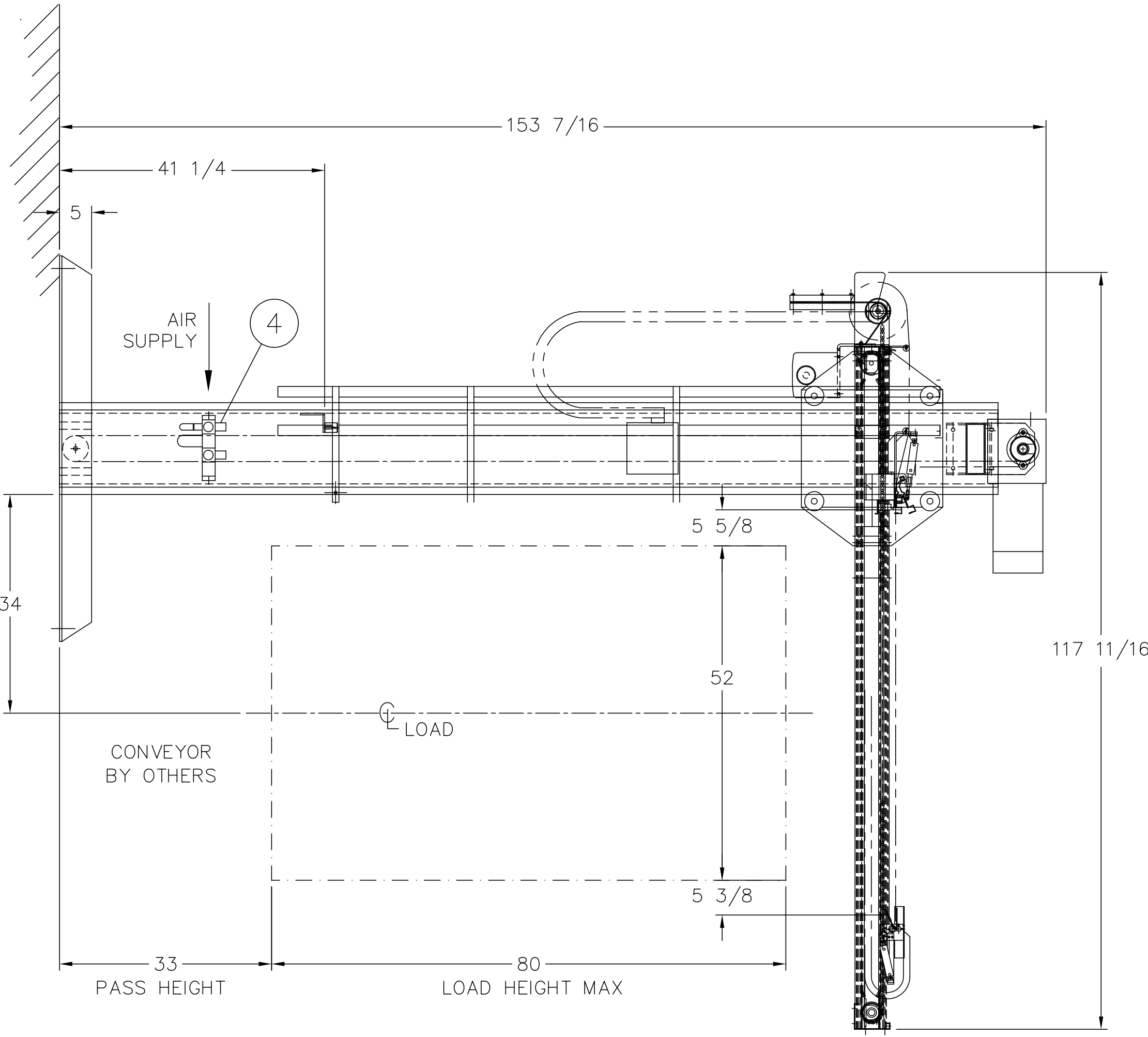


1. INSTALLATION REQUIREMENTS :
 - ELECTRICAL : 460 VAC, 3 PHASE, 60 Hz
 - PNEUMATIC : 80 PSI, 1 CFM
2. TOP SHEET DISPENSER MUST BE INSTALLED ON A FIRM FLOOR, PROPERLY LEVELED AND FIXED IN PLACE WITH ANCHOR BOLTS
3. PAINT SCHEME IS DARK AND LIGHT BRONZE
4. DO NOT SCALE DRAWING, USE DIMENSIONS SHOWN
5. FILM ROLL CAPACITY : 10"Ø x 70" W

1	D1717500	TSD LIFT ASSEMBLY	1.000	EACH
2	C7737600	TSD FILM APPLICATOR ASSEMBLY	1.000	EACH
3	D1719000	TSD ELECTRICAL ASSEMBLY	1.000	EACH
4	SMPN08012	FRL FILT-REG-LUBR 0.2500	1.000	EACH



ELECTRICAL CABINET
FIELD LOCATED BY CUSTOMER



TOP VIEW
FLOW DIRECTION
LEFT TO RIGHT →